

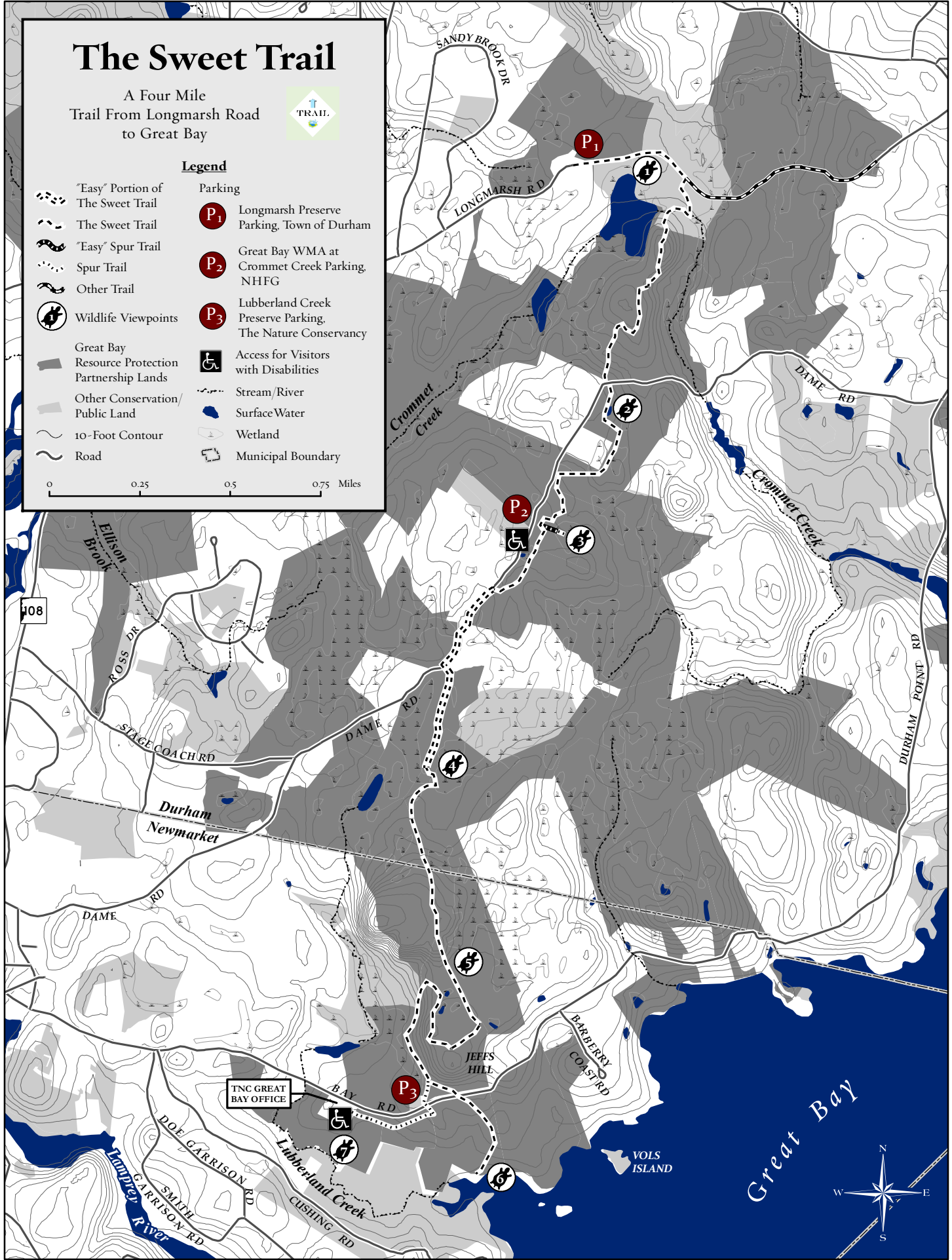
# The Sweet Trail

A Four Mile Trail From Longmarsh Road to Great Bay



## Legend

- |  |   |  |   |
|--|---|--|---|
|  | "Easy" Portion of The Sweet Trail               |  | Parking   |
|  | The Sweet Trail                                 |  | Longmarsh Preserve Parking, Town of Durham                |
|  | "Easy" Spur Trail                               |  | Great Bay WMA at Crommet Creek Parking, NHFG              |
|  | Spur Trail                                      |  | Lubberland Creek Preserve Parking, The Nature Conservancy |
|  | Other Trail                                     |  | Access for Visitors with Disabilities                     |
|  | Wildlife Viewpoints                             |  | Stream/River  |
|  | Great Bay Resource Protection Partnership Lands |  | Surface Water   |
|  | Other Conservation/Public Land                  |  | Wetland   |
|  | 10-Foot Contour                                 |  | Municipal Boundary  |
|  | Road  |  |   |



Great Bay

