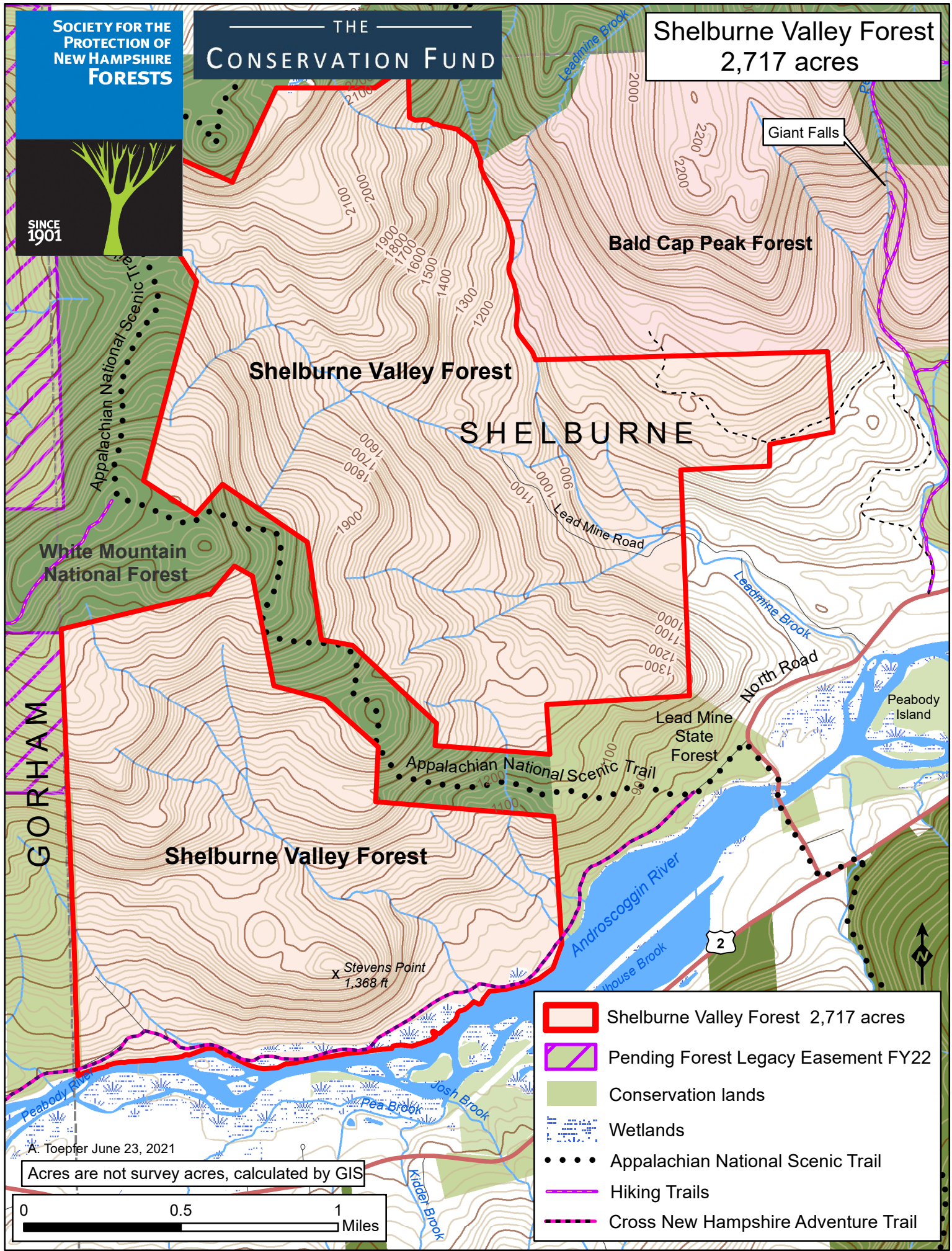


SOCIETY FOR THE PROTECTION OF NEW HAMPSHIRE FORESTS

THE CONSERVATION FUND

Shelburne Valley Forest 2,717 acres

SINCE 1901



Giant Falls

Bald Cap Peak Forest

Shelburne Valley Forest

SHELBURNE

Appalachian National Scenic Trail

White Mountain National Forest

GORHAM


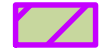





Shelburne Valley Forest

Appalachian National Scenic Trail

Lead Mine State Forest

Peabody Island

X Stevens Point 1,368 ft

-  Shelburne Valley Forest 2,717 acres
-  Pending Forest Legacy Easement FY22
-  Conservation lands
-  Wetlands
-  Appalachian National Scenic Trail
-  Hiking Trails
-  Cross New Hampshire Adventure Trail

A. Toepfer June 23, 2021

Acres are not survey acres, calculated by GIS

