



# Moody Mountain Forest

252 ACRES, WOLFEBORO, NH

## Reservation Details

Much of the 252 acre Moody Mountain Forest was formerly pastureland, as evidenced by stonewalls and juniper bushes now increasingly being shaded out by overstory trees. Trails lead through old field white pine, spruce and various hardwoods including beech and red oak. At the height of land is a cabin which is on the adjacent private property, but is open to the public. From the cabin you can stand at the highest point in Wolfeboro and take in the picturesque views of Lake Winnepesaukee. Wild blueberries can often be found at this spot in mid-summer.

**Did you know?** Moody Mountain Forest is home to numerous vernal pools, which are seasonally wet depressions used as breeding areas for certain amphibians, like wood frogs and spotted salamanders.

## Trail Information

The loop on this property trail was constructed in the summer of 2015 by volunteers and Forest Society staff. This trail now provides a roughly 1 mile round trip hike through the western portion of the property. At the north end it stops short of the cabin which remains unlocked and open to the public. Please treat it with respect.

- 🔗 **DIFFICULTY:** Moderate
- 🔗 **ROUND TRIP DISTANCE:** 1.4 miles to cabin and back, utilizing loop
- 🔗 **TRAIL MARKINGS:** Yellow rectangles

## Getting There/Directions

The entrance to Moody Mountain Forest is on the east side of Beach Pond Road, about 3.7 miles north of the intersection with 109A. There is a property sign and gate at this location, and parking is available alongside Beach Pond Road. Please do not block gate.

- 🔗 **Google Maps:** There is no street address, however, entering “Moody Mountain Forest, Wolfeboro, NH” in a google maps search will get you specific directions to the property from your location.

### Recreational Opportunities

- 🔗 Hiking
- 🔗 Nature observation
- 🔗 Snowshoeing/XC skiing
- 🔗 Hunting
- 🔗 Dog walking

### Available Amenities

- 🔗 Roadside Parking
- 🔗 Please note NO bathroom facilities are available at this location.

### Recreational Use Guidelines

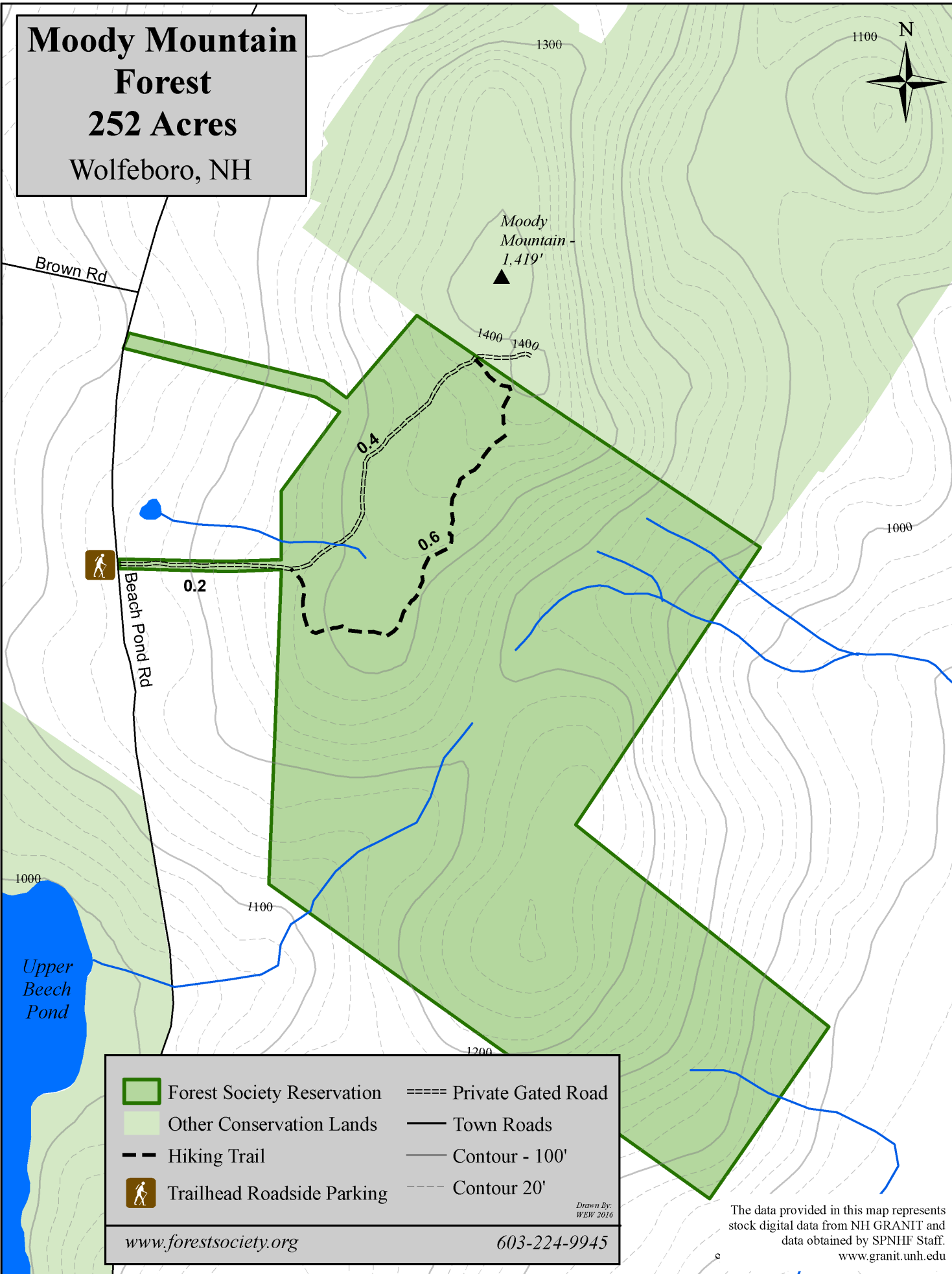
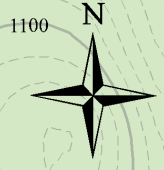
- 🔗 Please stay on trails at this property
- 🔗 No wheeled vehicles permitted on hiking trails, including bicycles, ATVs and dirt bikes.
- 🔗 Carry In, Carry Out all Trash
- 🔗 No camping or campfires
- 🔗 Do not disturb plants, animals or cultural features
- 🔗 Dogs must be under owner control at all times, and all dog waste packed out

#### COVID-19

##### HIKE SAFE TIPS

- Allow 6+ feet of distance between unrelated groups. Step off the trail to allow others to pass.
- Bring a mask or face covering and hand sanitizer in case you need it
- Don't attempt anything risky or outside your comfort zone
- BYO lunch and plenty of water!

**Moody Mountain  
Forest  
252 Acres  
Wolfeboro, NH**



The data provided in this map represents stock digital data from NH GRANIT and data obtained by SPNHF Staff.  
[www.granit.unh.edu](http://www.granit.unh.edu)