



Madame Sherri Forest

513 ACRES, CHESTERFIELD, NH

Reservation Details

Madame Sherri Forest is a 513-acre tract on the east slope of Wantastiquet Mountain, aka “Rattlesnake Mountain” in Chesterfield. The property abuts 847-acre Wantastiquet State Forest. Trails on Madame Sherri are linked via the Wantastiquet to Monadnock Trail, from the Connecticut River east to Mount Monadnock. The 2.0 mile **Anne Stokes Loop Trail** leads to scenic Indian Pond. Other trails ascend Wantastiquet Mountain for excellent views.

Did you know? Madame Sherri was a Paris-born theatrical costume designer who built her French-inspired chateau with extensive stonework including a roman arch stairway, ornate interior, and designed landscape gardens. Lavish parties during the 1920 made her infamous. The home fell to ruin, vandalized in 1959 and burned completely in 1963 prior to her death in 1965. Anne Stokes donated the property to the property to the Forest Society property in 1991 to protect the landscape and colorful legacy of Madame Sherri

The foundation, chimneys, and grand stone staircase of the former Madame Sherri “castle” are just 100 feet up a short side trail. With respect to the memory of all those who have enjoyed this special place in the past: please do not alter the natural or built features of the property in any way. **DO NOT CLIMB** on the stone staircase, please.

Trails Information

The 2.0 mile Ann Stokes Loop Trail provides a loop from the parking lot, crosses a bridge and ascends to the shore of Indian Pond and returns. Visit the castle ruins near the parking lot. **DO NOT CLIMB** on the stone staircase.

- 🔗 **DIFFICULTY:** Moderately strenuous
- 🔗 **ROUND TRIP DISTANCE:** 2 mile mile loop

Getting There/Directions

The parking area and trailhead kiosk for Madame Sherri Forest is located along Gulf Road in Chesterfield, NH

- 🔗 **Google Maps:** Entering “Madame Sherri Forest, West Chesterfield, NH” will get you directions to the property from your location.

Recreational Opportunities

- 🔗 Hiking
- 🔗 Nature observation
- 🔗 Snowshoeing, XC skiing
- 🔗 Dog walking

Available Amenities

- 🔗 Small parking area
- 🔗 Information kiosk
- 🔗 Please note NO bathroom facilities are available at this location.

Recreational Use Guidelines

- 🔗 No wheeled vehicles including bicycles, dirt bikes, ATVs
- 🔗 Carry In, Carry Out All Trash
- 🔗 No camping or campfires
- 🔗 Do not disturb plants, animals or cultural features.
- 🔗 Parking area is not plowed in winter.
- 🔗 Dogs must be under owner control at all times, and all dog waste packed out.

COVID-19

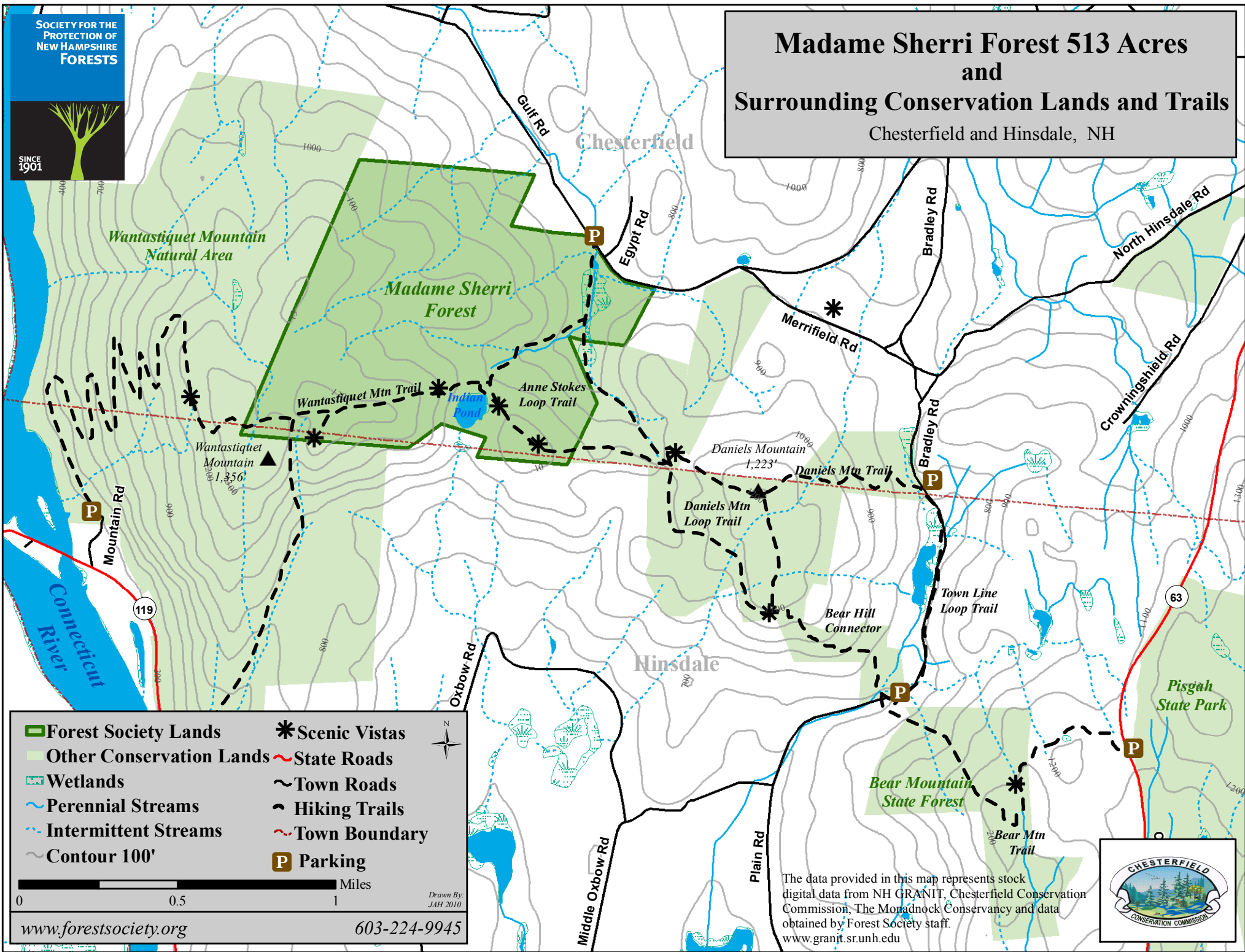
HIKE SAFE TIPS

- Allow 6+ feet of distance between unrelated groups. Step off the trail to allow others to pass.
- Bring a mask or face covering and hand sanitizer in case you need it
- Don't attempt anything risky or outside your comfort zone
- BYO lunch and plenty of water!



Madame Sherri Forest 513 Acres and Surrounding Conservation Lands and Trails

Chesterfield and Hinsdale, NH



Forest Society Lands	Scenic Vistas	N
Other Conservation Lands	State Roads	
Wetlands	Town Roads	Miles
Perennial Streams	Hiking Trails	
Intermittent Streams	Town Boundary	0 0.5 1
Contour 100'	Parking	

Drawn By: JAH 2010

The data provided in this map represents stock digital data from NH GRANIT, Chesterfield Conservation Commission, The Monadnock Conservancy and data obtained by Forest Society staff.
www.granit.sr.unh.edu

