



# The Heald Tract

1492 ACRES, WILTON/TEMPLE, NH

## Reservation Details

The Heald Tract is a 1492-acre reservation stretching across Wilton, Temple, Greenville and Mason, NH. The original 340+ acre tract was donated to the Forest Society by the Heald family in 1986, and the three Heald siblings have donated a total of 1,030 acres since, with the objective that the land be maintained as an open space used for low impact recreation and education.

**Did you know?** The trails cross over a rich, ecologically diverse habitat, so keep your eyes open for wild animals like deer and otter, and your ears open for bird calls. There is also a large beaver dam on Castor Pond, which is accessible on the Camp Trail Loop.

## Trail Information

With over 8 miles of trails, the Heald Tract offers many different hiking options. We recommend two here:

- 🔗 **Heald Pond Trail:** Leaves from either parking area on Heald Road. Easy 1.6 mi hike following shoreline of a beautiful wild-life pond, yellow blazes.
- 🔗 **Camp Trail/Castor Pond Loop:** Trail leaves from southernmost parking area on Heald Road. Moderately strenuous 4.0 miles (blue and green blazes). The Castor Pond Loop can also be accessed from McGregor Road parking (white and green blazed trails).

## Getting There/Directions

The parking areas for the Heald Tract are accessed off of Route 101 in Wilton. Exit Route 101 onto Russell Hill Road. In 1.3 miles, the McGregor Road parking pull off will be on your right. To reach the parking areas on Heald Pond Road, continue past McGregor Road on Russell Hill Rd (turns into Kimball Hill) for 1.6 miles and turn right on Heald Road. The two Heald Road parking areas are in 0.2 and 0.6 miles, respectively.

- 🔗 **Google Maps:** Entering “McGregor Road, Wilton NH” will get directions to McGregor Road parking. Entering “Heald Pond Trail, Wilton, NH” will get you directions to the larger Heald Road parking area.

## Recreational Opportunities

- 🔗 Hiking
- 🔗 Fishing
- 🔗 Dog walking
- 🔗 Nature observation
- 🔗 Snowshoeing/XC Skiing

## Available Amenities

- 🔗 Parking areas, not plowed in winter
- 🔗 Information kiosk
- 🔗 Please note NO bathroom facilities are available at this location.

## Recreational Use Guidelines

- 🔗 No wheeled vehicles permitted, including bicycles, dirt bikes and ATVs
- 🔗 Carry In, Carry Out all trash and dog waste
- 🔗 No camping or campfires
- 🔗 Do not disturb plants, animals or cultural features.
- 🔗 No boating is permitted on Heald Pond (a.k.a. Batchelder Pond (including kayaking and canoeing)

### COVID-19

#### HIKE SAFE TIPS

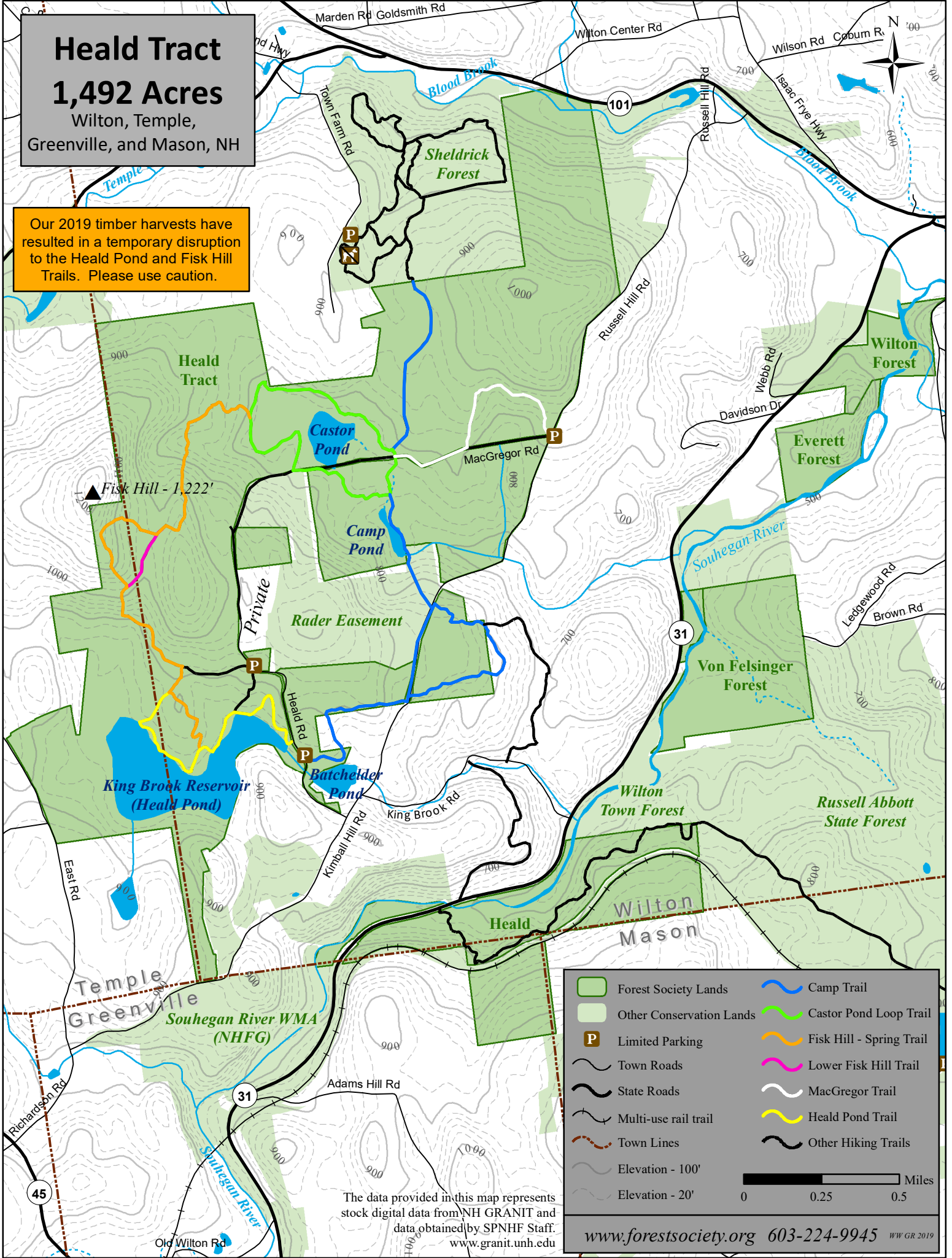
- Allow 6+ feet of distance between unrelated groups. Step off the trail to allow others to pass.
- Bring a mask or face covering and hand sanitizer in case you need it
- Don't attempt anything risky or outside your comfort zone
- BYO lunch and plenty of water!

# Heald Tract

## 1,492 Acres

Wilton, Temple,  
Greenville, and Mason, NH

Our 2019 timber harvests have resulted in a temporary disruption to the Heald Pond and Fisk Hill Trails. Please use caution.



- |  |                          |  |                          |
|--|--------------------------|--|--------------------------|
|  | Forest Society Lands     |  | Camp Trail               |
|  | Other Conservation Lands |  | Castor Pond Loop Trail   |
|  | Limited Parking          |  | Fisk Hill - Spring Trail |
|  | Town Roads               |  | Lower Fisk Hill Trail    |
|  | State Roads              |  | MacGregor Trail          |
|  | Multi-use rail trail     |  | Heald Pond Trail         |
|  | Town Lines               |  | Other Hiking Trails      |
|  | Elevation - 100'         |  |                          |
|  | Elevation - 20'          |  |                          |

The data provided in this map represents stock digital data from NH GRANIT and data obtained by SPNHF Staff. [www.granit.unh.edu](http://www.granit.unh.edu)