



Hay Reservation

718 ACRES, NEWBURY, NH

Reservation Details

The Hay Forest Reservation is a 718-acre tract in Newbury donated to the Forest Society in 1961. It offers nearly 4 miles of trails and woods roads for hiking. Pine, oak, spruce, hemlock and northern hardwood forests grew-back on former hay fields, pastures and orchards. The summit of Sunset Hill offers views of Lake Sunapee, Mt. Sunapee and distant VT peaks including Mt. Ascutney. Beech Brook and Old County Road, flanked by stone walls, bisect the tract. Watch for abundant wild-life and stone-lined cellars of former farms.

Did you know? John Hay was first private secretary and biographer of Abraham Lincoln and later served as US Secretary of State to Presidents William McKinley and Theodore Roosevelt. The historic Hay family summer home “The Fells” and adjacent John Hay National Wildlife Refuge are located on Lake Sunapee.

Trail Information

The Sunset Hill Trail starts opposite The Fells entrance on NH Rte 103-A. The trail reaches a ‘T’ 500 feet past the trailhead kiosk – turn left. Trail climbs gently for 0.6 miles until it reaches Old County Road running north-south through the Hay Reservation. Turn right here. After 350 feet, turn left towards Sunset Hill. The trail climbs more steeply for about .5 miles before reaching the rocky summit of Sunset Hill. Elevation gain is about 550 feet.

- 🔗 **DIFFICULTY:** Moderately strenuous
- 🔗 **ROUND TRIP DISTANCE:** 2.4 mile loop
- 🔗 **TRAIL MARKINGS:** Yellow rectangles

Getting There/Directions

Parking is behind the white gate house office of The Fells Historic Estate and Gardens. The trailhead is located opposite, across Rt. 103A. The Hay Forest has long frontage along the east side of Route 103-A. Look for “The Fells” entrance and the Forest Society logo and Hay Forest Reservation property sign opposite the stone pillars at the gate house.

- 🔗 **Google Maps:** Enter “The Fells Historic Estate and Gardens” to get specific directions to the property from your location. The physical street address is 456 Route 103-A, Newbury, NH 03255

Recreational Opportunities

- 🔗 Hiking
- 🔗 Nature Observation
- 🔗 Snowshoeing/XC skiing
- 🔗 Dog walking
- 🔗 Picnicking

Available Amenities

- 🔗 Parking area adjacent at The Fells.
- 🔗 Information kiosk
- 🔗 Please note NO bathroom facilities are available at this location.

Recreational Use Guidelines

- 🔗 No wheeled vehicles permitted (including bikes)
- 🔗 Carry In, Carry Out all Trash
- 🔗 No camping or campfires
- 🔗 Do not disturb plants, animals or cultural features.
- 🔗 Dogs must be under owner control at all times, and all dog waste packed out.

COVID-19

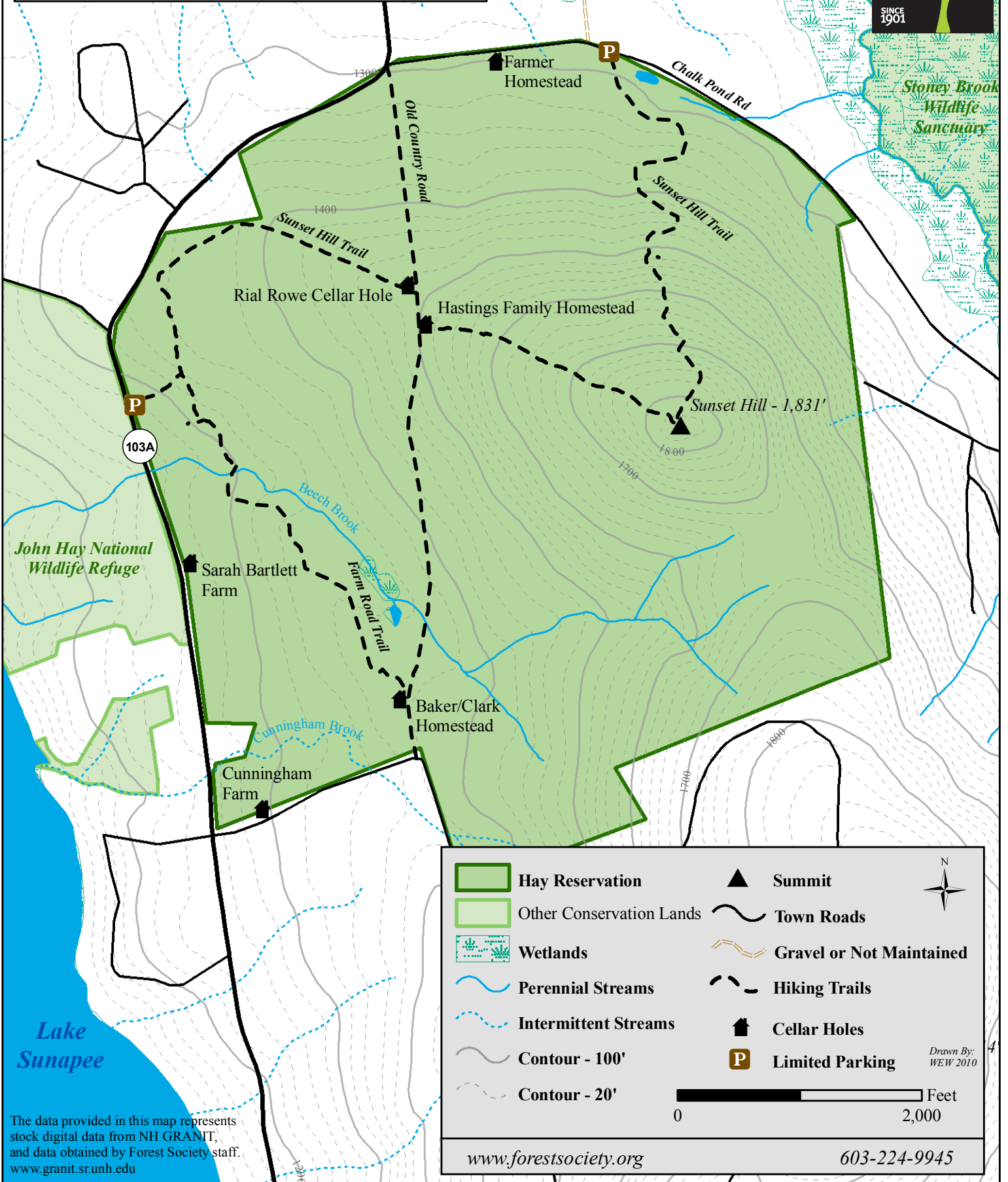
HIKE SAFE TIPS

- Allow 6+ feet of distance between unrelated groups. Step off the trail to allow others to pass.
- Bring a mask or face covering and hand sanitizer in case you need it
- Don't attempt anything risky or outside your comfort zone
- BYO lunch and plenty of water!

C. L. Hay Forest and Wildlife Management Area

719 Acres Newbury, NH

SOCIETY FOR THE PROTECTION OF NEW HAMPSHIRE FORESTS



	Hay Reservation		Summit	
	Other Conservation Lands		Town Roads	
	Wetlands		Gravel or Not Maintained	
	Perennial Streams		Hiking Trails	
	Intermittent Streams		Cellar Holes	Drawn By: WEW 2010 www.forestssociety.org 603-224-9945
	Contour - 100'		Limited Parking	
	Contour - 20'			

The data provided in this map represents stock digital data from NH GRANIT, and data obtained by Forest Society staff. www.granit.sr.unh.edu