



Ashuelot River Headwaters Forest

1826 ACRES, LEMPSTER, NH

Reservation Details

The Ashuelot River Headwaters Forest in Lempster consists of several large tracts of land that were once owned by the Wright family, famous for their silver polish company. These lands, which include the scenic summit of Silver Mountain as well as significant frontage on Long and Sand Ponds, were protected in 2012 following an impressive community fundraising campaign.

Did you know? Blueberries are often abundant in late summer on the summit of Silver Mountain, and you can see the peaks of Mt. Kearsarge, Mt. Sunapee, and Mt. Monadnock on a clear day.

Trail Information

Silver Mountain Trail has one of the best views for moderate effort in the state! The trail begins across from the large field (parking) on South Road, just to the left (south) of the cabin. Look for yellow blazes painted on the trees and rocks near the open summit. There is one nice viewpoint just below the summit, but keep climbing for those nearly 360-degree views!

- 🔗 **DIFFICULTY:** Moderate
- 🔗 **ROUND TRIP DISTANCE:** 1.2 miles
- 🔗 **TRAIL MARKINGS:** Yellow rectangles

Getting There/Directions

The Silver Mountain parking & trailhead is on South Road in Lempster, **which should be accessed from the north (off of Lempster Mountain Rd)**. From Mountain Rd., go south on South Rd for approximately 2 miles (road will turn to dirt and may be rough for the section that is not maintained in winter). After 2.0 miles you will see a large field on your left for parking with stone pillars marking the field entrance.

- 🔗 **Google Maps:** Entering “Silver Mountain Trail, Lempster, NH” will get you directions from your location to the trailhead. **Please be sure you accessing South Road from the north (off Mountain Road).**

Recreational Opportunities

- 🔗 Hiking
- 🔗 Nature Observation
- 🔗 Snowshoeing
- 🔗 Dog walking
- 🔗 Hunting
- 🔗 Blueberry picking

Available Amenities

- 🔗 Field for parking
- 🔗 Please note NO bathroom facilities are available at this location.

Recreational Use Guidelines

- 🔗 No wheeled vehicles permitted, including bicycles, dirt bikes, ATVs
- 🔗 Carry In, Carry Out all Trash
- 🔗 No camping or campfires
- 🔗 Parking area and unmaintained section of South Road not plowed in winter.
- 🔗 Dogs must be under owner control at all times, and all dog waste packed out.

COVID-19

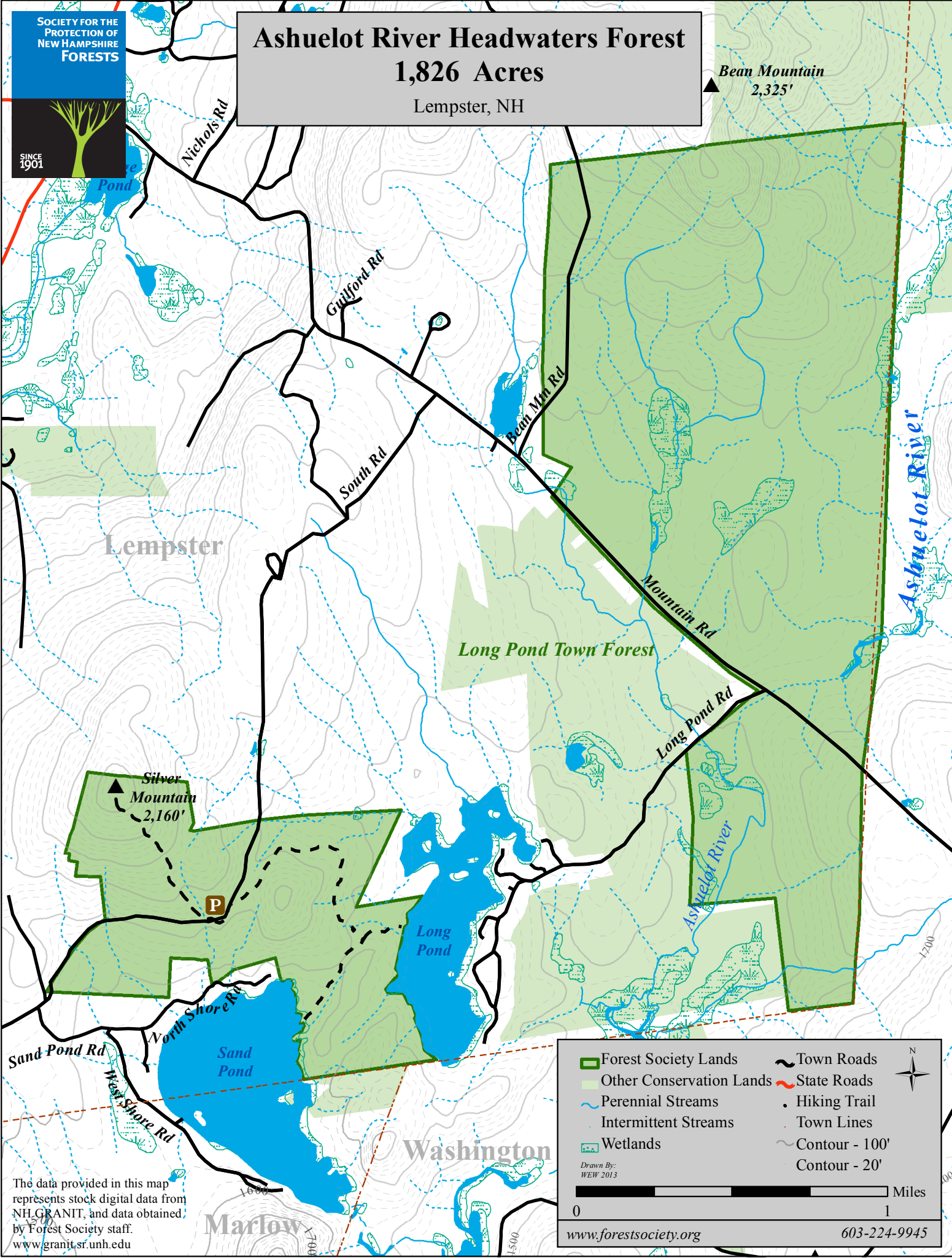
HIKE SAFE TIPS

- Allow 6+ feet of distance between unrelated groups. Step off the trail to allow others to pass.
- Bring a mask or face covering and hand sanitizer in case you need it
- Don't attempt anything risky or outside your comfort zone
- BYO lunch and plenty of water!

Ashuelot River Headwaters Forest

1,826 Acres
Lempster, NH

▲ *Bean Mountain*
2,325'



Lempster

Long Pond Town Forest

▲ *Silver Mountain*
2,160'

Washington

Marlow

Forest Society Lands	Town Roads	
Other Conservation Lands	State Roads	
Perennial Streams	Hiking Trail	
Intermittent Streams	Town Lines	
Wetlands	Contour - 100'	Miles 0 1
	Contour - 20'	

Drawn By:
WEW 2013

www.forestsociety.org 603-224-9945

The data provided in this map represents stock digital data from NH GRANIT, and data obtained by Forest Society staff.
www.granit.sr.unh.edu