



Gap Mountain Reservation

1,120 ACRES, TROY/JAFFREY, NH

Reservation Details

The forest on Gap Mountain is a legacy of extensive farm pastures which formerly extended over the entire mountain, including the 1,862 foot summit. Today, the lower slopes of Gap Mountain are cloaked in second-growth forest of white pine and red oak. The remains of former apple orchards can be found along both the north and south trails to the summit.

Did you know? Gap Mountain is named for the prominent saddle or “gap” between its summits. In fact, there are 3 summits on Gap Mountain. The south summit is wooded with no views. Both the middle and north summits (which the trail passes over) have fine views, and the famous “gap” is between these two.

Trail Information

Gap Mountain can be hiked from either the north side (2.4 miles round trip) or the south side (2.6 miles round trip), both along the Metacomet-Monadnock Trail which travels up and over the mountain. From the top you can enjoy handsome views of neighboring Mount Monadnock while munching on a handful of blueberries in summer. Despite the distance and rocky nature, this is a great “first mountain” hike for many families, and interesting enough for seasoned hikers as well.

- 🔗 **DIFFICULTY:** Strenuous, a small bit of rock scrambling on south trail near summit.
- 🔗 **ROUND TRIP DISTANCE:** 2.4 miles round trip (north parking lot to summit and back) or 2.6 mi round trip (south parking lot to summit and back)
- 🔗 **TRAIL MARKINGS:** White rectangles for Metacomet-Monadnock Trail; yellow rectangles for south trailhead parking lot spur (to reach M-M Trail).

Getting There/Directions

North Trail: From the town of Jaffrey, take Route 124 west for 6 miles and then turn left onto Bullard Road. Drive for 0.5 miles and turn left at the Gap Mountain Reservation property sign marking the parking area for Gap North trailhead.

Google Maps: Using the address “Gap Mountain Trail North, Bullard Rd, Jaffrey, NH” in the google maps search will get you specific directions to the property from your location.

South Trail: Parking lot is on Upper Gap Mountain Rd, in Troy, NH. From the Junction of Route 12 and Bowkerville Road, go NE on Gap Mt Rd for 0.4 miles. Bear right to stay on Gap Mt Rd (0.4 mi) then turn left on Upper Gap Mt Rd. Parking lot is on left in 0.2 mi.

Google Maps: Use “Gap Mountain Trail South” in your google maps search bar to get specific directions.

Recreational Opportunities

- 🔗 Hiking
- 🔗 Nature observation
- 🔗 Snowshoeing
- 🔗 Dog walking
- 🔗 Hunting
- 🔗 Blueberry picking

Available Amenities

- 🔗 Parking lot, not plowed in winter
- 🔗 Information kiosk
- 🔗 Portable toilets in parking lot during warmer months

Recreational Use Guidelines

- 🔗 Please stay on trails at this property
- 🔗 No wheeled vehicles permitted (including bikes)
- 🔗 Carry In, Carry Out all Trash
- 🔗 No camping or campfires
- 🔗 Do not disturb plants, animals or cultural features.
- 🔗 Dogs must be under owner control at all times, and all dog waste packed out

COVID-19

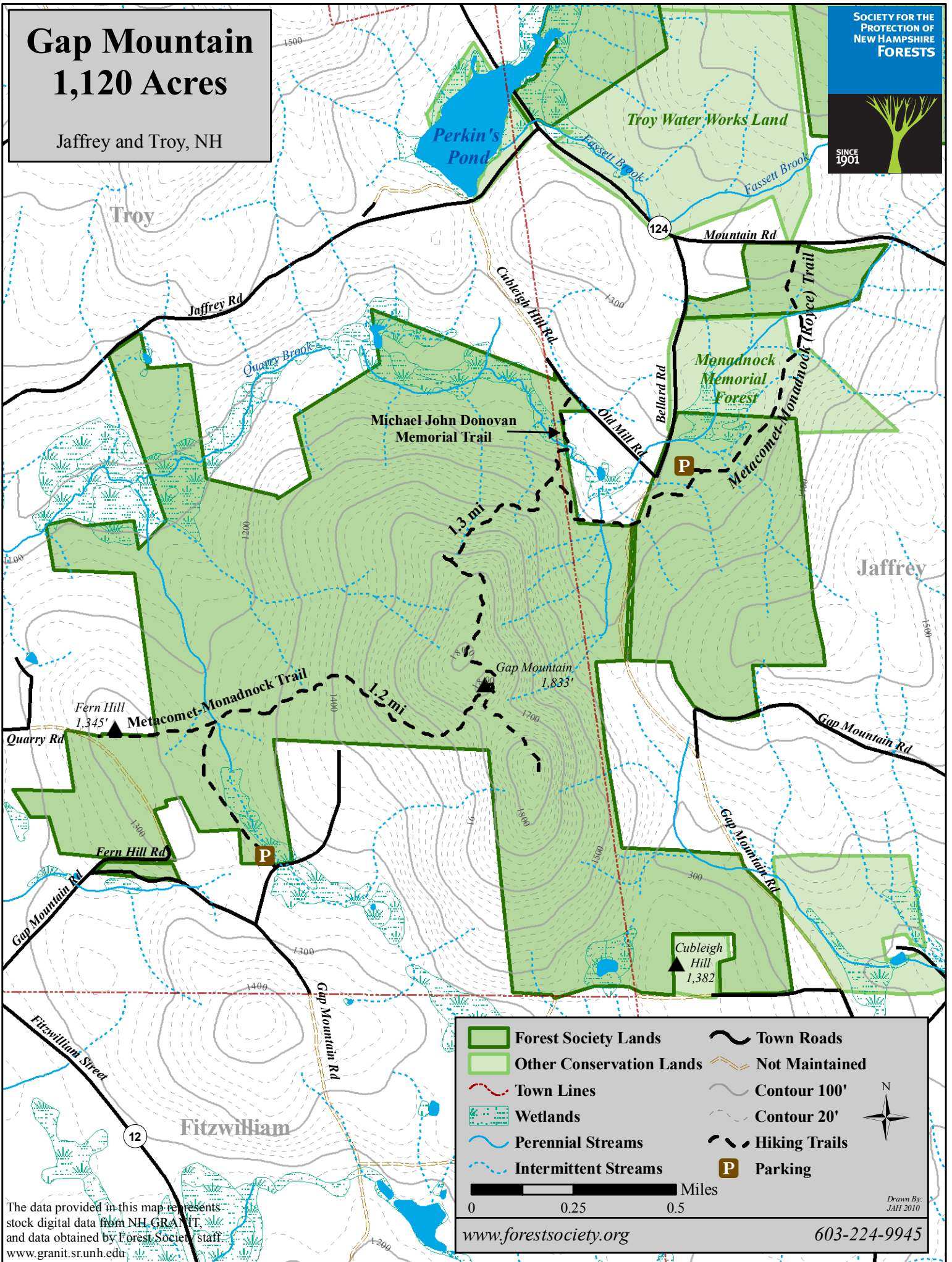
HIKE SAFE TIPS

- Allow 6+ feet of distance between unrelated groups. Step off the trail to allow others to pass.
- Bring a mask or face covering and hand sanitizer in case you need it
- Don't attempt anything risky or outside your comfort zone
- BYO lunch and plenty of water!

Gap Mountain 1,120 Acres

Jaffrey and Troy, NH

SOCIETY FOR THE
PROTECTION OF
NEW HAMPSHIRE
FORESTS



Forest Society Lands	Town Roads
Other Conservation Lands	Not Maintained
Town Lines	Contour 100'
Wetlands	Contour 20'
Perennial Streams	Hiking Trails
Intermittent Streams	Parking

0 0.25 0.5 Miles

www.forestsocty.org

603-224-9945

Drawn By:
JAH 2010

The data provided in this map represents stock digital data from NH GRANIT and data obtained by Forest Society staff. www.granit.sr.unh.edu