



Monadnock Reservation Dublin Trail

ACRES, DUBLIN & JAFFREY NH

Reservation Details

The Forest Society first acquired land on Mount Monadnock in 1914, and more than a century later we have protected more than 4,500 acres on and surrounding the mountain. All of this land is leased to NH State Parks (NHSP) to be managed as part of Monadnock State Park. NHSP and the Forest Society work together to maintain the more than 40 miles of trail on Mount Monadnock.

Did you know? The word Monadnock means “mountain that stands alone,” and at 3,166’ in elevation, the summit of Monadnock does rise well above any other landform in the region. Monadnock is one of the most hiked mountains in the United States, with more than 100,000 visitors annually.

Trail Information

This is a beautiful route to the summit of Mt. Monadnock, and is often less crowded than routes beginning at the State Park headquarters. Like all routes to Monadnock’s summit, the Dublin Trail is a challenging hike. Plan on 4-5 hours round trip and be sure to bring plenty of water and food. Several steep sections require some hands-on rock scrambling to ascend and descend, but the views are definitely worth it if you are up for the challenge! Dublin trail intersects with the Marlboro Trail before reaching the summit, so be sure you are following the white painted “D” markings for the Dublin Trail on your way back down.

Please note **NO DOGS** are allowed at Mt Monadnock.

- ℳ **DIFFICULTY:** Very strenuous
- ℳ **ROUND TRIP DISTANCE:** 4.4 miles
- ℳ **TRAIL MARKINGS:** white painted “D” markings, especially above tree line

Getting There/Directions

Parking lot for the Dublin Trail is on Old Troy Rd in Dublin. From the Dublin Lake Club Golf Course on Lake Rd/Old Marlboro Rd, head south on Old Troy Road for 1.8 miles and the parking area will be on your right.

- ℳ **Google Maps:** Entering “Dublin Trailhead, Monadnock Reservation, Dublin, NH” will get you specific directions to the property

Recreational Opportunities

- ℳ Hiking
- ℳ Nature Observation
- ℳ Great views
- ℳ Hunting

Available Amenities

- ℳ Gravel parking area
- ℳ Information kiosk
- ℳ Portable toilets

Recreational Use Guidelines

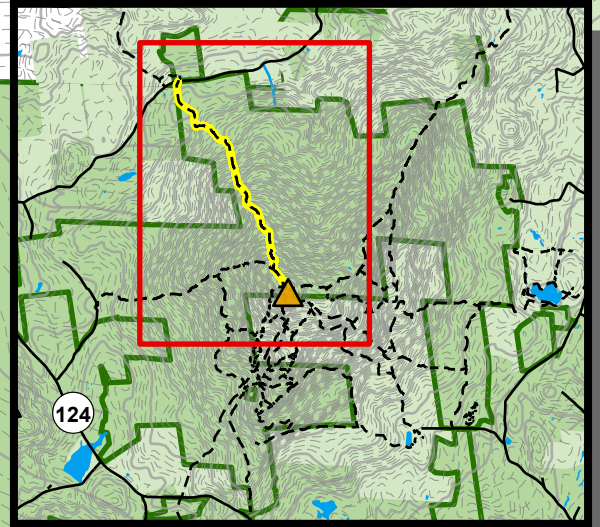
- ℳ No wheeled vehicles please.
- ℳ Carry In, Carry Out all Trash
- ℳ No camping or campfires
- ℳ Do not disturb plants, animals or cultural features.
- ℳ Parking area not plowed in winter
- ℳ Sorry, Dogs are NOT permitted at Mt. Monadnock.



For more information visit:
Visitnh.gov/leavenotrace

Dublin Trail Monadnock Reservation 4,519 Acres

Dublin, NH



SOCIETY FOR THE
PROTECTION OF
NEW HAMPSHIRE
FORESTS



Monadnock
Reservation

P Parking

- - Hiking Trail

— Road

~ Streams

Contours

— 100' Contour

- - 20' Contour

▲ Summit

■ Forest Society Lands

■ Other Conservation

Lands

The data provided in this map represents stock digital data from NH GRANIT, and data obtained by Forest Society staff. www.granit.unh.edu

Drawn By:
DMS 2023



www.forestssociety.org 603-224-9945

0 0.25 0.5 Miles

Marlboro Tr

Mount
Monadnock
3,165 ft

To Park HQ

White Dot Tr

White Cross Tr

Monadnock
State Park