



# Black Mountain Forest

1294 ACRES, SUTTON AND WARNER, NH

## Reservation Details

The 1,294 acre Black Mountain Forest in Sutton and Warner, NH was protected in 2010. It is named for a secondary peak to Mt. Kearsarge, Black Mountain, and the property protects managed forest lands, cascading trout streams, and extraordinary views of the Sunapee and Cardigan highlands. The Lincoln Trail, part of the Sunapee-Ragged-Kearsarge Greenway (SRKG), climbs through Black Mountain Forest on its way to the summit of Mt. Kearsarge. For this hike, we suggest heading to Baker's Ledge, a viewpoint about half way up the Lincoln Trail—round trip 4.2 miles.

**Did you know?** Rollins State Park on Mount Kearsarge was originally protected by the Forest Society, and was transferred to the State of NH to become a state park in 1950.

## Trail Information

From the parking area, this trail begins through a recently harvested area adjacent to the Black Mountain Forest. In 0.5 miles (you will see Black Mt Forest sign), turn LEFT onto the Lincoln Trail (here a wide snowmobile corridor). After 1.0 mile take another LEFT onto a much smaller trail (also the Lincoln Trail) for another half mile. At this point there will be a spur marked "scenic route", turn left here and follow the foot path for 0.1 mile to views at Baker's Ledge. Retrace your steps back down the Lincoln Trail to the parking area.

- 🔗 **DIFFICULTY:** Strenuous
- 🔗 **ROUND TRIP DISTANCE:** 4.2 miles
- 🔗 **TRAIL MARKINGS:** SRKG trail markers

## Getting There/Directions

The parking pull off for the Lincoln Trail through Black Mountain Forest is on the east side of Kearsarge Valley Road in Sutton, about a half mile from the junction with North Road.

- 🔗 **Google Maps:** Entering "Lincoln Trail, Kearsarge Valley Road, Sutton, NH" will get you specific directions to the property from your location.

### Recreational Opportunities

- 🔗 Hiking
- 🔗 Nature Observation
- 🔗 Snowshoeing
- 🔗 Hunting

### Available Amenities

- 🔗 Roadside parking
- 🔗 Please note NO bathroom facilities are available at this location.

### Recreational Use Guidelines

- 🔗 No wheeled vehicles please
- 🔗 Carry In, Carry Out all Trash
- 🔗 No camping or campfires
- 🔗 Do not disturb plants, animals or cultural features.
- 🔗 Parking area not plowed in winter
- 🔗 Dogs must be under owner control at all times, and all dog waste packed out.

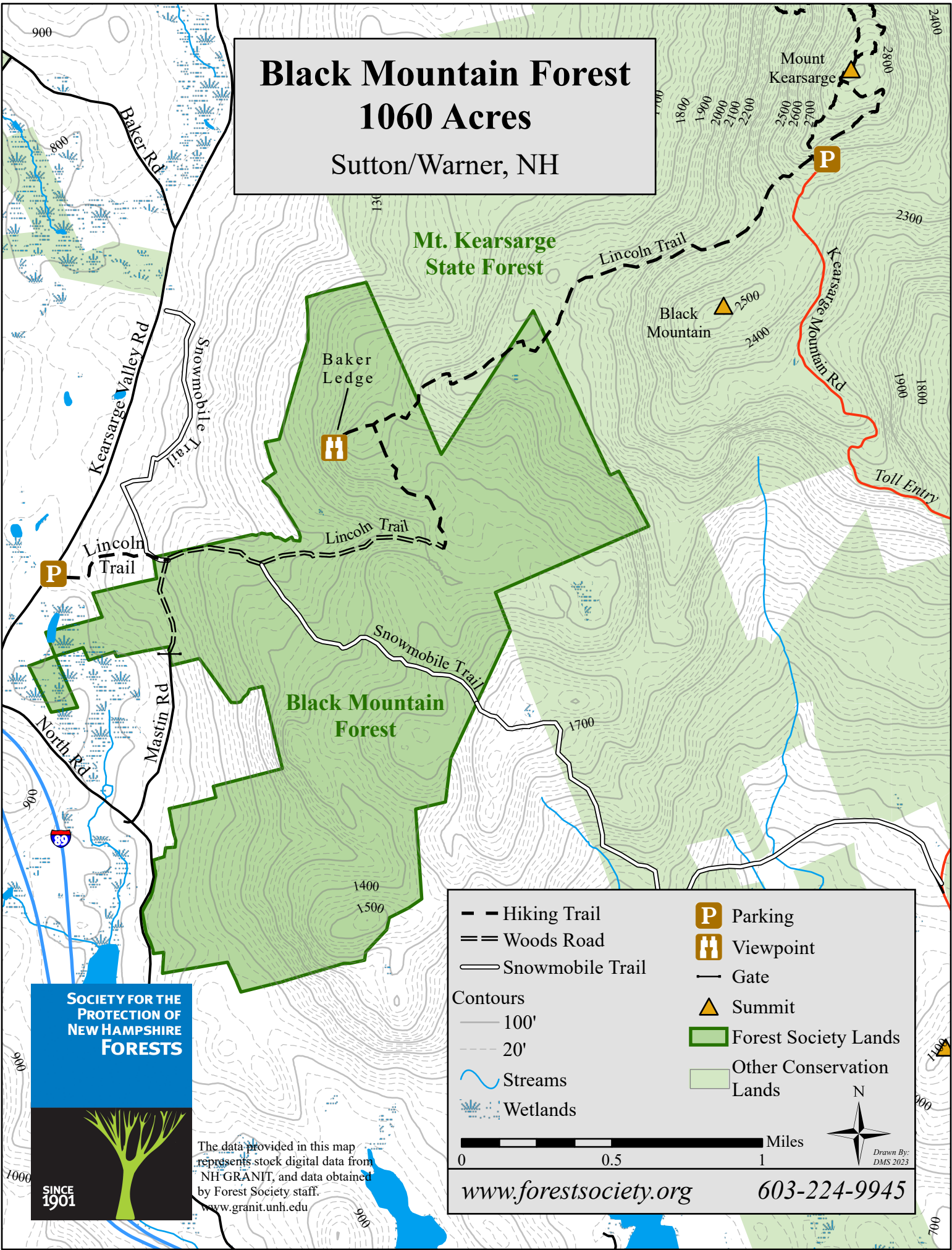


 **LEAVE  
NO TRACE**

**For more information visit:  
[Visitnh.gov/leavenotrace](http://Visitnh.gov/leavenotrace)**

# Black Mountain Forest 1060 Acres

Sutton/Warner, NH



**SOCIETY FOR THE PROTECTION OF NEW HAMPSHIRE FORESTS**

SINCE 1901

The data provided in this map represents stock digital data from NH GRANIT, and data obtained by Forest Society staff.  
www.granit.unh.edu

--- Hiking Trail	<b>P</b> Parking
== Woods Road	<b>V</b> Viewpoint
— Snowmobile Trail	— Gate
Contours	▲ Summit
— 100'	<b>FS</b> Forest Society Lands
- - - 20'	<b>OC</b> Other Conservation Lands
~ Streams	
Wetlands	
<p><a href="http://www.forestsociety.org">www.forestsociety.org</a>      603-224-9945</p>	

Drawn By: DMS 2023